

RERA NO.: UPRERAPRJ622344/11/2025  
<https://up-rera.in/projects>  
COLLECTION ACCOUNT DETAILS:  
NAME: GAURSONS PROMOTERS PVT LTD  
COLLECTION A/C FOR GAUR CHRYSALIS (Phase 1)  
PROJECT COLLECTION ACCOUNT NO.: 9150397619  
BANK NAME: KOTAK MAHINDRA BANK | IFSC CODE: KKBK0005028  
BANK ADDRESS: FIRST FLOOR, SHOP NO. 104 & 105 & 106, HARSHA MALL, ALFA-1, COMM. BELT, GR. NOIDA | LAUNCH DATE: 04-11-2025


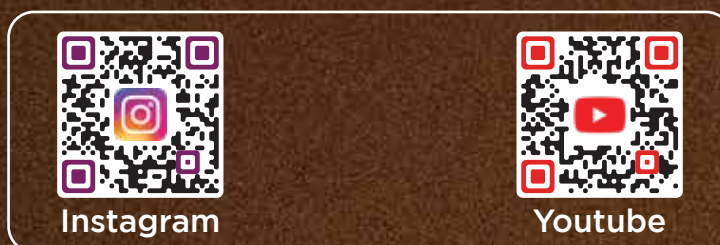


RERA NO.: UPRERAPRJ622344/11/2025  
<https://up-rera.in/projects>  
COLLECTION ACCOUNT DETAILS:  
NAME: GAURSONS PROMOTERS PVT LTD  
COLLECTION A/C FOR GAUR CHRYSALIS (Phase 1)  
PROJECT COLLECTION ACCOUNT NO.: 9150397619  
BANK NAME: KOTAK MAHINDRA BANK | IFSC CODE: KKBK0005028  
BANK ADDRESS: FIRST FLOOR, SHOP NO. 104 & 105 & 106, HARSHA MALL, ALFA-1, COMM. BELT, GR. NOIDA | LAUNCH DATE: 04-11-2025



**GAUR**  
**CHRYSALIS**  
*The Beauty of Becoming*  
(PHASE 1)

Scan to follow us on



**GAUR**  
**CHRYSALIS**  
*The Beauty of Becoming*  
(PHASE 1)



**GAURSONS PROMOTERS PRIVATE LIMITED**

Site Address : Gaur Chrysalis, Plot No. GH-12, Sector-22 D, YEIDA, Greater Noida, U.P.  
[www.gaurchrysalis.com](http://www.gaurchrysalis.com) | [care@gaurchrysalis.com](mailto:care@gaurchrysalis.com)

Corporate Office: Gaur Biz Park, Plot No.1, Abhay Khand-II, Indirapuram, Ghaziabad - 201014  
[gaursonsindia.com](http://gaursonsindia.com)



*Becoming*  
an epitome  
of excellence





---

EVERY GREAT  
BEAUTY IS BORN  
FROM CHANGE -  
IT'S THE  
JOURNEY THAT  
SHAPES  
PERFECTION.

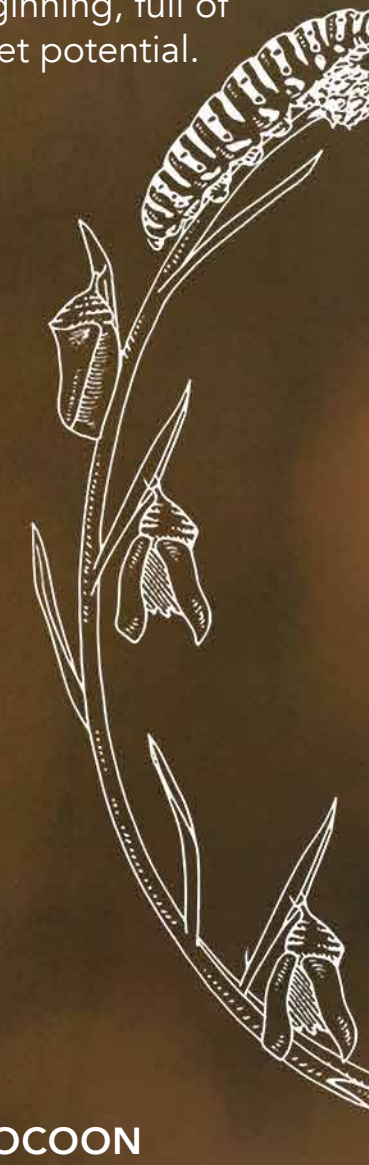
**THE BUTTERFLY**

NATURE'S OWN EMBLEM OF GRACE -  
BEGINS ITS JOURNEY IN A HUMBLE  
COCOON. QUIETLY, IT NURTURES ITSELF,  
AWAITING ITS MOMENT TO EMERGE IN  
COLOURS, BEAUTY, AND FREEDOM.

BE READY FOR A CREATION WHERE  
LIFE TRANSFORMS INTO SOMETHING  
TIMELESS, BEAUTIFUL, AND  
EXTRAORDINARY!

**1 CATERPILLAR**

A humble  
beginning, full of  
quiet potential.



**2 COCOON**

A pause of patience,  
where promise is  
nurtured.

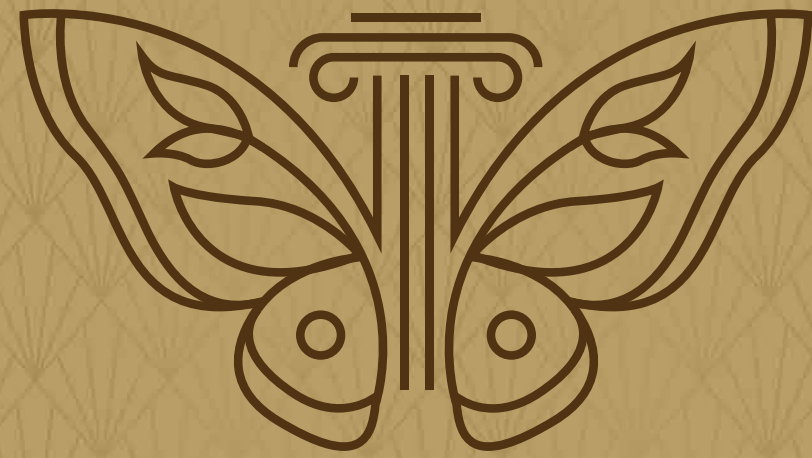


**4 BLOOM**

Life in harmony  
with nature,  
completing the  
circle of beauty.

**3 BUTTERFLY**

Emerging in  
colours, grace,  
and freedom.



WITNESS THE BEAUTY  
OF BECOMING



@

**THE YAMUNA  
EXPRESSWAY**

# THE YAMUNA EXPRESSWAY- FROM BARREN STRETCHES TO A VISION IN MOTION

Once the Yamuna Expressway corridor was a little more than endless stretches of farmland and untouched land. Its potential was hidden, waiting for a spark of vision.

- ▶ The six-lane expressway itself was the first milestone - a bold stroke of infrastructure connecting Delhi to Agra and putting this region on the map.
- ▶ It laid the foundation for what was to come.
- ▶ Slowly, opportunities began to whisper - with plans for industrial hubs, sports infrastructure, and the first glimpses of an urban tomorrow.



Disclaimer: All images, layouts, specifications, statements, and other artistic depictions contained in this brochure are for illustrative and representational purposes only and do not constitute any legal offering, representation, or warranty of any nature. References in this brochure to future infrastructure, connectivity, institutional or commercial development, or growth potential of the area or development zone are based on the prevailing information available in public domain and shall not, in any manner, be construed as assurances, commitments, or guarantees of such developments or timelines thereof. Prospective purchasers are advised to verify all details, including project approvals, sanctioned plans, specifications, and the current status of surrounding developments, independently before making any investment.



## **YAMUNA EXPRESSWAY TODAY- AN EMERGING GROWTH CORRIDOR**

The Yamuna Expressway has already transformed into a rising destination.

- ▶ It links Delhi, Noida, Greater Noida, and Agra seamlessly, with the Eastern Peripheral Expressway further boosting accessibility.
- ▶ Sports infrastructure, universities, and industrial parks already give the region a new identity.
- ▶ Emerging industrial and logistics hubs.
- ▶ Existing sports and lifestyle landmarks (F1 track, universities, townships).

---

Source:  
[www.yamunaexpresswayauthority.com](http://www.yamunaexpresswayauthority.com)

Disclaimer: All images, layouts, specifications, statements, and other artistic depictions contained in this brochure are for illustrative and representational purposes only and do not constitute any legal offering, representation, or warranty of any nature. References in this brochure to future infrastructure, connectivity, institutional or commercial development, or growth potential of the area or development zone are based on the prevailing information available in public domain and shall not, in any manner, be construed as assurances, commitments, or guarantees of such developments or timelines thereof. Prospective purchasers are advised to verify all details, including project approvals, sanctioned plans, specifications, and the current status of surrounding developments, independently before making any investment.

Image used for reference purpose only.

# THE CATALYST OF CHANGE- NOIDA INTERNATIONAL AIRPORT ARRIVES @ THE YAMUNA EXPRESSWAY

The story of the future begins with India's largest upcoming airport - Noida International Airport (Jewar). Spread over 1,300+ hectares and developed by Zurich Airport International AG, the airport will be a true game-changer.

- ▶ Upcoming Noida International Airport (NIA) would be **India's largest and world's 4th largest Airport**
- ▶ Managed & Operated by Yamuna International Airport Private Limited (YIAPL) a subsidiary of Zurich Airport International AG Envisioned to be 6-Runway Airport, expanding into 2900 hectares
- ▶ Developed through a Public-Private Partnership Model (PPP) A Green Field Airport
- ▶ India's first **100% FDI** airport project. Direct boost to **residential, commercial, and industrial demands**. Phase 1 will be operational by 2025, handling millions of passengers annually, while multiple phases will add more terminals and runways over time.
- ▶ This Landmark will redefine connectivity, business travel, tourism, and real estate dynamics across the entire corridor.

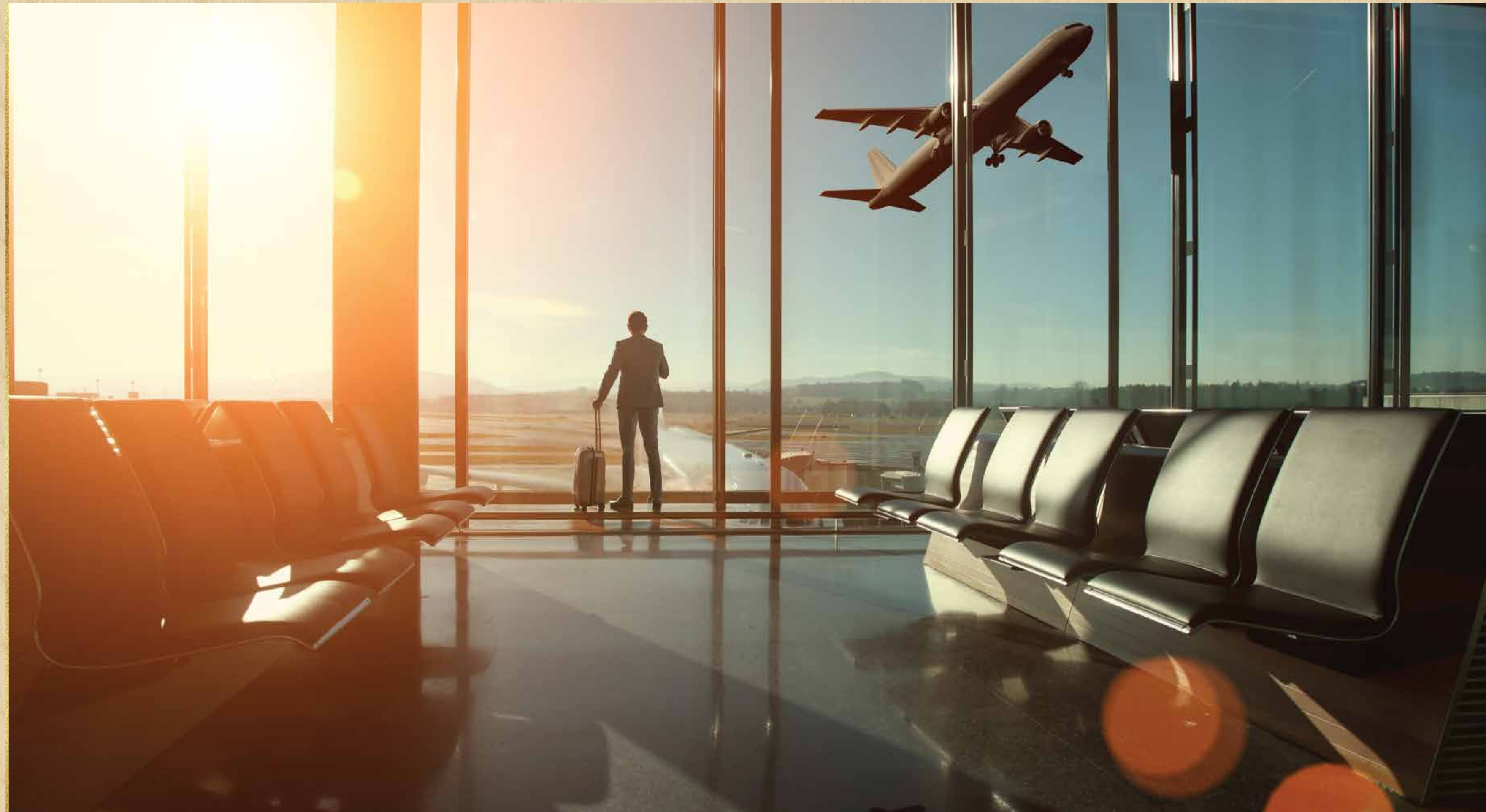


Image used for reference purpose only.

Disclaimer: All images, layouts, specifications, statements, and other artistic depictions contained in this brochure are for illustrative and representational purposes only and do not constitute any legal offering, representation, or warranty of any nature. References in this brochure to future infrastructure, connectivity, institutional or commercial development, or growth potential of the area or development zone are based on the prevailing information available in public domain and shall not, in any manner, be construed as assurances, commitments, or guarantees of such developments or timelines thereof. Prospective purchasers are advised to verify all details, including project approvals, sanctioned plans, specifications, and the current status of surrounding developments, independently before making any investment.



## A WAVE OF MEGA DEVELOPMENTS -TRANSFORMING YAMUNA EXPRESSWAY INTO AN ECONOMIC POWERHOUSE

- ▶ From Logistics hubs to Electric Mobility Zones from **Residential Townships** to **IT & Fin Tech cities**, the region is developing into a thriving ecosystem.
- ▶ Multiple Industrial Zones planned such as **Toy Park, MRO, Film City, Leather Manufacturing Park, Heritage City, Furniture Hub, Handloom Cluster, Medical Device Park, Metro Coach Factory** and many more.
- ▶ Attracting immense global & national investments from **Corporate Giants**.

Disclaimer: All images, layouts, specifications, statements, and other artistic depictions contained in this brochure are for illustrative and representational purposes only and do not constitute any legal offering, representation, or warranty of any nature. References in this brochure to future infrastructure, connectivity, institutional or commercial development, or growth potential of the area or development zone are based on the prevailing information available in public domain and shall not, in any manner, be construed as assurances, commitments, or guarantees of such developments or timelines thereof. Prospective purchasers are advised to verify all details, including project approvals, sanctioned plans, specifications, and the current status of surrounding developments, independently before making any investment.

Image used for reference purpose only.

## YAMUNA EXPRESSWAY- THE VISION OF 2030

By 2030, Yamuna Expressway will stand as one of India's most futuristic cityscapes.

Being next to the Noida International Airport the area will see a high growth owing to excellent infrastructure & connectivity.

Ancillary Businesses (Cargo, Warehouse, Logistics, Hospitality, Trade) often grow exponentially in such areas because of shorter commute time and better utilities.

Areas near the Airport see strong appreciation once the Airport becomes functional.

Sources:  
[www.economicstimes.indiatimes.com](http://www.economicstimes.indiatimes.com)  
[www.wikipedia.org](http://www.wikipedia.org)



Image used for reference purpose only.

Disclaimer: All images, layouts, specifications, statements, and other artistic depictions contained in this brochure are for illustrative and representational purposes only and do not constitute any legal offering, representation, or warranty of any nature. References in this brochure to future infrastructure, connectivity, institutional or commercial development, or growth potential of the area or development zone are based on the prevailing information available in public domain and shall not, in any manner, be construed as assurances, commitments, or guarantees of such developments or timelines thereof. Prospective purchasers are advised to verify all details, including project approvals, sanctioned plans, specifications, and the current status of surrounding developments, independently before making any investment.

# LONG BEFORE THE BUZZ, WE ENVISIONED THE REGION'S POTENTIAL

With our world-class township, we set the tone for large-scale, self-sustained living - bringing premium homes, world-class amenities, and lifestyle experiences to the region. Today, we continue this journey, creating benchmarks that define the region's skyline.

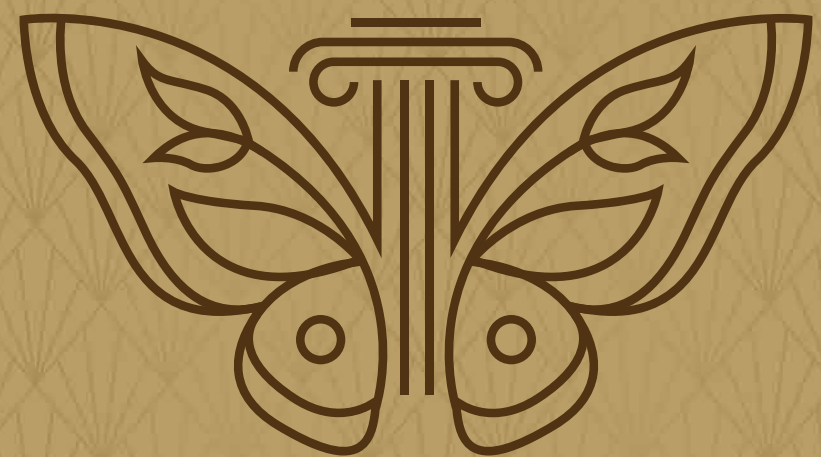


Spread over a massive 101 hectares (250 acres).

Seamless confluence of Residential, Commercial and Retail.

Plots, Apartments, Retail Shops, Studio Apartments, Themed Villas, Sports and a lot more.





GET READY FOR  
THE NEXT CHAPTER



**DESIGNED FOR  
THOSE WHO  
DEMAND SERENITY,  
EXCLUSIVITY, AND  
THE RAREST FORM  
OF BEAUTY.**



INTRODUCING



**GAUR**  
**CHRYSA LIS**

— *The Beauty of Becoming* —

(PHASE 1)

**3 & 4 BHK**  
**Landmark Residences**

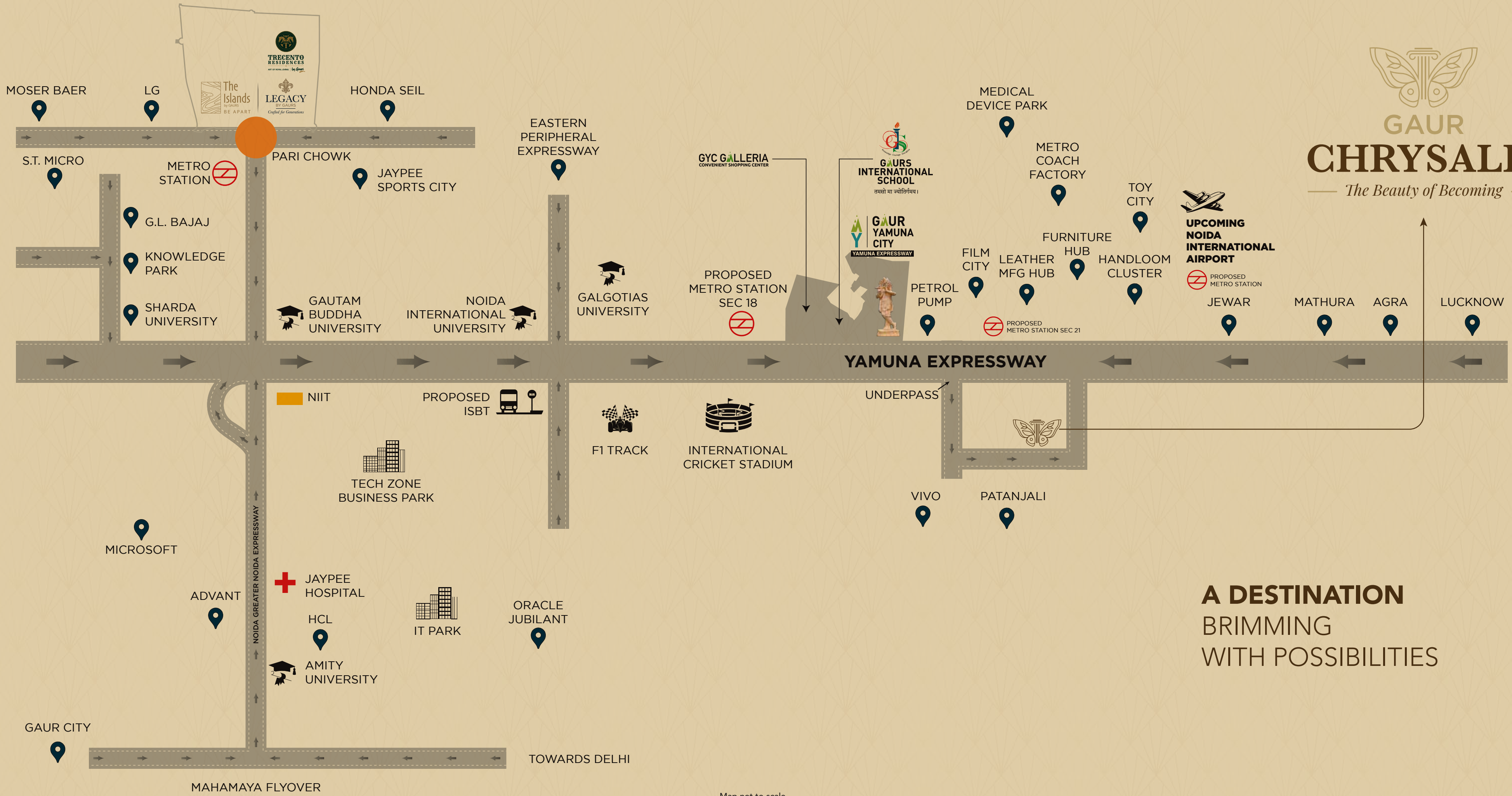


THE BEAUTY OF BECOMING  
ONE OF THE FINEST  
PROJECTS ON THE  
**YAMUNA EXPRESSWAY**





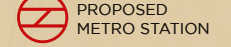
*Becoming*  
the talk of the town!



GAUR  
**CHRYsalIS**  
*The Beauty of Becoming*



**UPCOMING  
 NOIDA  
 INTERNATIONAL  
 AIRPORT**



**PROPOSED  
 METRO STATION**

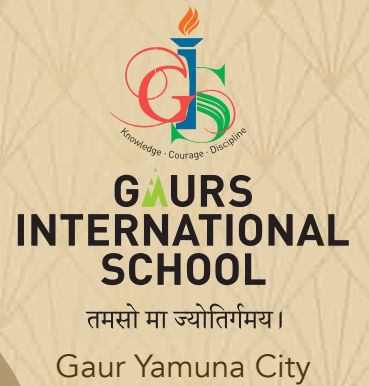
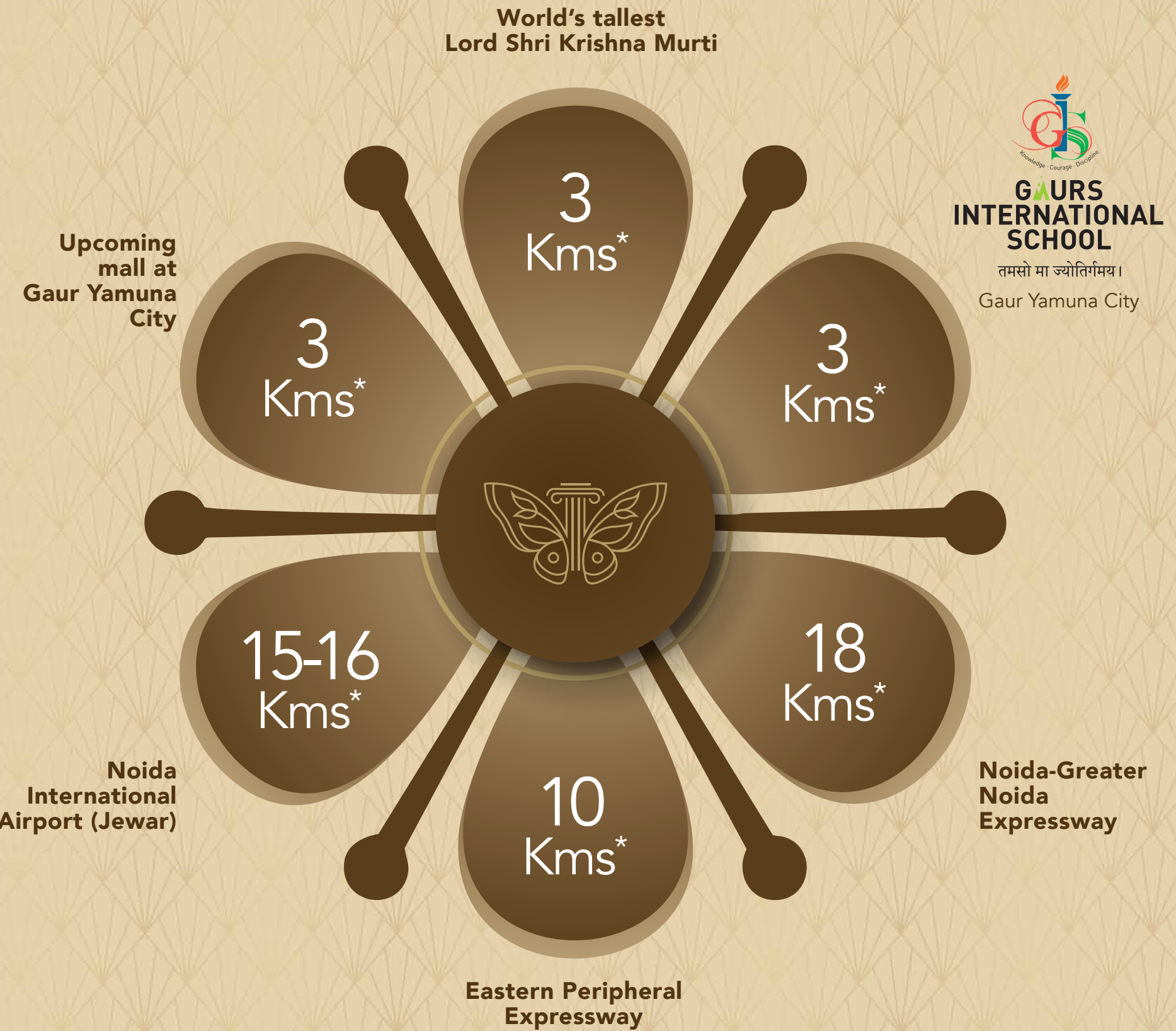
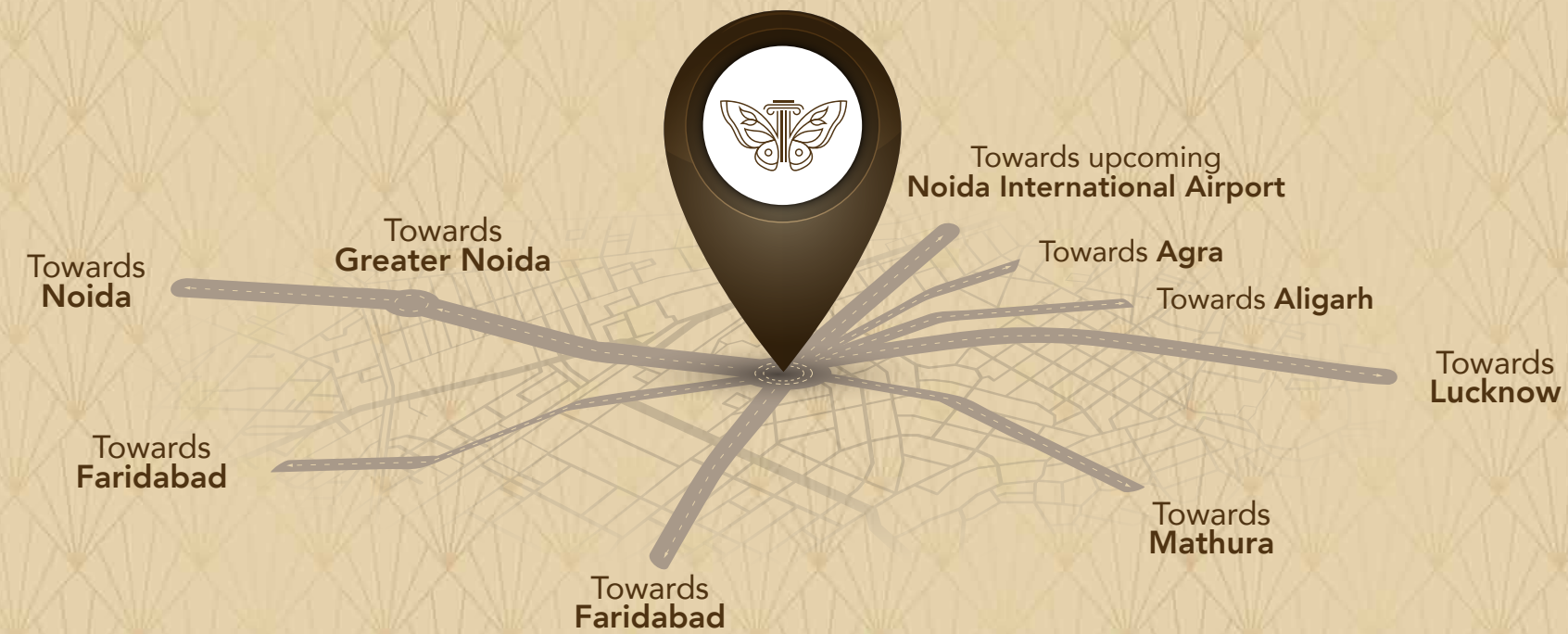
**A DESTINATION  
 BRIMMING  
 WITH POSSIBILITIES**

Map not to scale

# AT THE HEART OF GROWTH, AT THE CENTER OF CONVENIENCE

Gaur Chrysalis is situated on the Yamuna Expressway, the fastest growing corridor of India.

Located adjacent to upcoming Noida International Airport, Business Hubs, Entertainment Zones and so much more, it literally brings world at your doorstep.



# WELCOME TO A WORLD OF **ELEGANCE AND UNMATCHED LUXURY**

Gaur Chrysalis draws inspiration from the art of perfect transformation, crafting a world where every aspect would be extraordinary and memorable.

Project spread across approx.  
**4.77 hectares (11.8 acres)**

**7 Towers (Phase 1)**

**Total open area including Landscaped  
Greens in 3.23 hectares (8 acres)\***  
inspired by *the beauty of a Butterfly*

**Grand Entrance - Triple height lobby**

Club & Project Interiors on the  
**Art Deco theme**

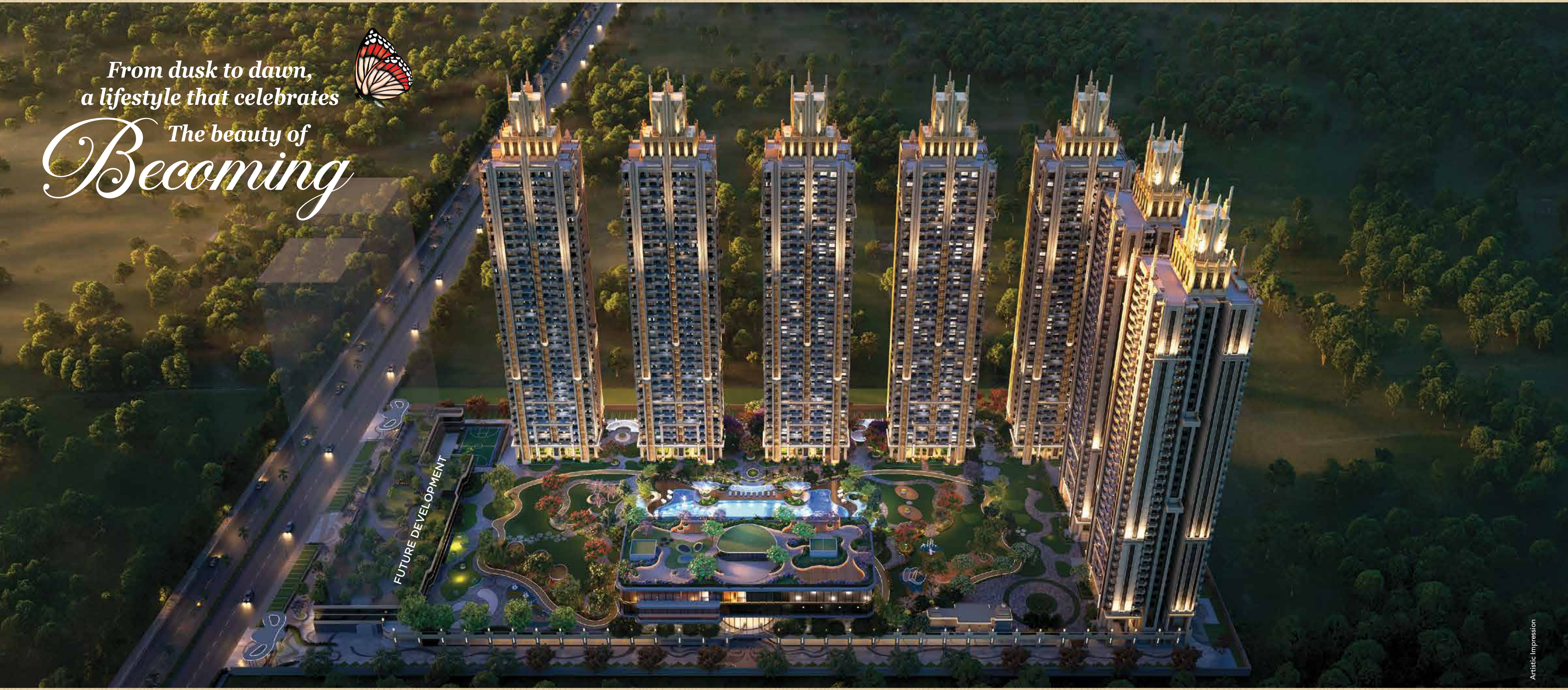
The **biggest Clubhouse** on the Yamuna  
Expressway **6867 Sq. Mt.**  
**(75,000 Sq. Ft.)** spread over multiple  
levels with **75+ amenities.**



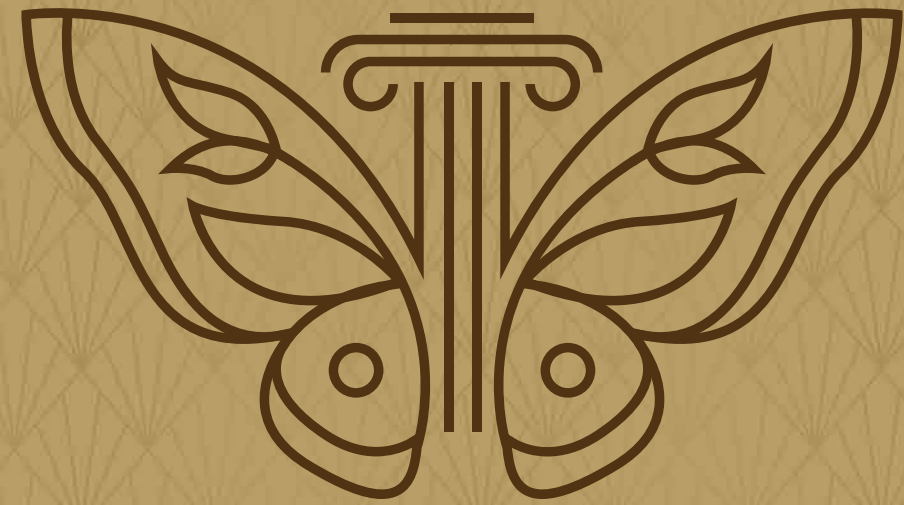
*From dusk to dawn,  
a lifestyle that celebrates*



*The beauty of  
Becoming*



FUTURE DEVELOPMENT



**MASTER - PLANNED  
TO HARMONIZE  
GRANDEUR WITH  
CONVENIENCE**

---

Spread across breathtaking 4.77 hectares (11.8 acres), the master layout is designed for harmony. Well Planned Internal Roads, Beautiful Central Landscaped Greens and a Grand Clubhouse ensure ease of movement and indulgence at every step. Wide boulevards, lush green belts, and walkable avenues ensure effortless living in a community designed for generations.

---





## VISION OF THE PROJECT ARCHITECT

The architecture of the project draws inspiration from timeless imperial styles.

Every arch, pillar, and facade tells a story of heritage.

Inside, expansive layouts and regal interiors create a life worthy of royalty.



## GROWING IN ELEGANCE THROUGH THE CONTRIBUTION OF INTERNATIONALLY FAMED DEVELOPERS

Project Architecture -  
Imperial grandeur, featuring  
contemporary facades with modern  
design elements.

Project Architect -  
**Ar. Hafeez Contractor**

Interiors Architect -  
**OchreInk**

Landscape Architect -  
**Site Concepts International**

Structure -  
**R D Consultant**

MEP -  
**Paradise Consultant**



# GLOBALY RECOGNIZED ICON OF INDIAN ARCHITECTURE

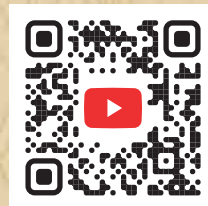
## THE ENDURING LEGACY OF HAFEEZ CONTRACTOR

- India's most renowned architect and a Padma Bhushan awardee.
- Revolutionized urban living with designs that balance innovation, functionality, and grandeur.
- Work ranging from futuristic campuses to soaring high-rises.

### SIGNATURE WORKS:

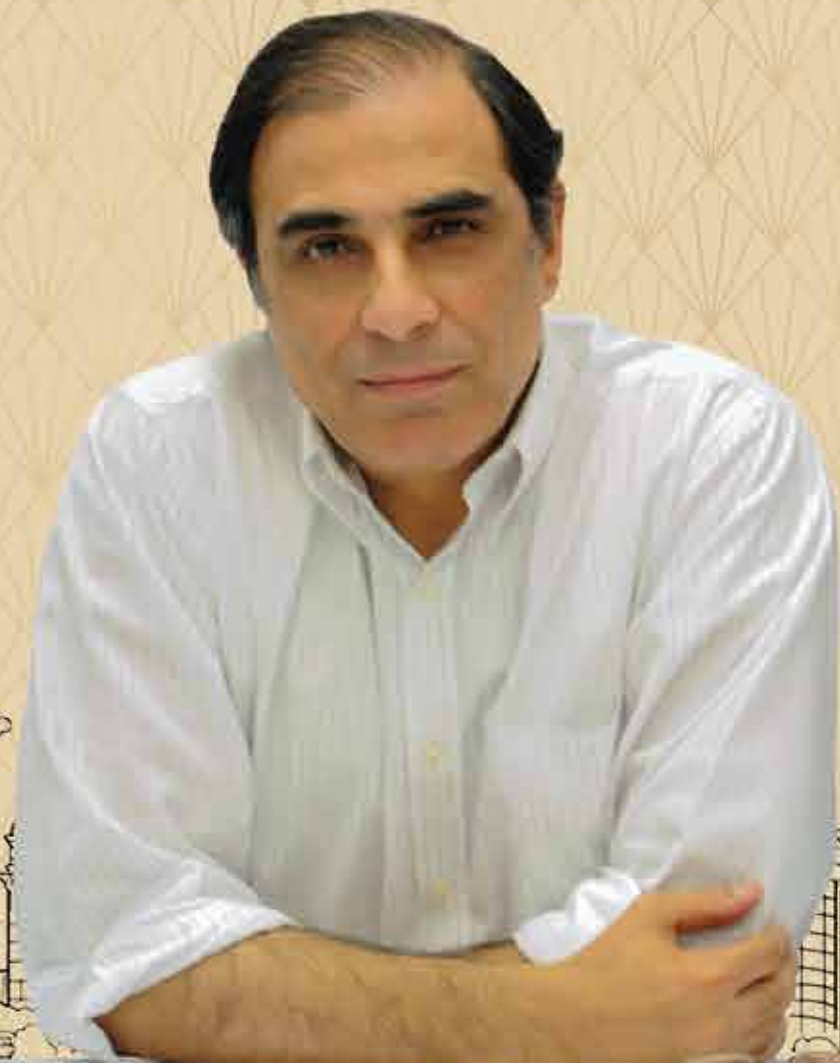
- D Y Patil Sports Stadium, Navi Mumbai
- Lavasa City, Pune
- Turbhe Railway Station, Navi Mumbai

SCAN FOR



ARCHITECT'S MESSAGE

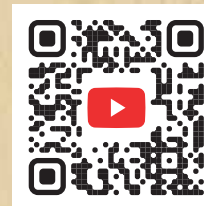
**Ar. Hafeez Contractor**  
Project Architect



# TRANSFORMING MODERN LANDSCAPES

Under the visionary leadership of Clint Owen, Design Director - Site Concepts International (SCI) has established a reputation for high quality professional planning and design throughout Asia with active projects in over eight countries.

SCAN FOR



ARCHITECT'S MESSAGE

### LANDSCAPE ARCHITECT



**Clint Owen**  
Design Director



# THE ART OF OPULENCE - MEET THE MAESTRO OF LUXURY LIVING

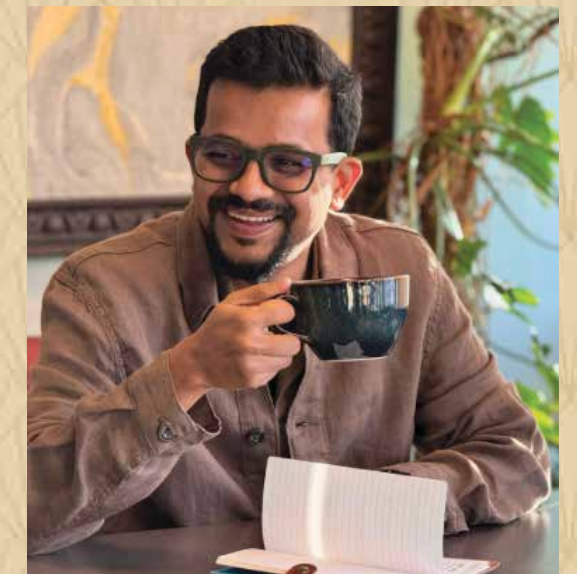
The name 'Ochreink' derives inspiration from the color ochre itself, emphasizing an awareness of sustainability and following the principle of always being connected to one's roots. With over 17 years of professional experience in varied segments, Sachin Chavan has a knack for innovations and ideas in synchronicity with the client's needs.

SCAN FOR



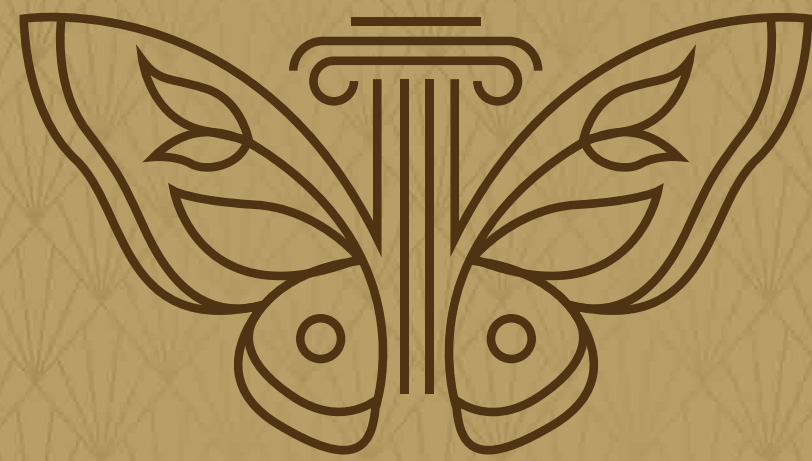
ARCHITECT'S MESSAGE

### INTERIORS ARCHITECT



**Sachin Chavan**  
Principal Designer





THE BEAUTY  
OF BECOMING



THE  
EMBODIMENT  
OF PERFECT  
PLANNING



Where your  
*Dream*  
lifestyle takes shape



## THE BEAUTY OF BECOMING AN EPITOME OF ART IN LANDSCAPING

The landscaping at Gaur Chrysalis takes inspiration from the transformation of a butterfly.

It has Beautiful Central Landscaped Greens spread over an expansive area which would include lawns, tranquil water bodies, shaded boulevards and leisure zones.





A transformation  
towards fine  
*Luxury*  
living

*Total open area including Landscaped Greens in 3.23 hectares (8 acres)  
inspired by the beauty of a Butterfly*

# THE BEAUTY OF BECOMING CRAFTED BY NATURE. ELEVATED BY DESIGN.



## AQUA ZONE

Outdoor Swimming Pool - Olympic Size (Lap Length)  
Jacuzzi  
Aqua Gym  
Bubble Jets  
Kids Pool  
Pool Deck  
Pool Bar / Juice Bar



## GARDENS & GREEN SPACES ZONES

Butterfly Garden  
Fern Garden  
Pooja Flowers Garden  
Fruit Orchard  
Plumeria Garden  
Succulent Garden  
Wellness Garden  
Zen Garden  
Floral Pavilion  
Meandering Walkway  
Palm Promenade  
Viewing Edge Garden  
Fairy Light Garden



## RELAXATION & MEDITATION ZONES

Meditation Corner  
Meditation Pods  
Resting Pavilion  
Sunken Lounge  
Day Beds  
Lounge Deck  
Viewing Pods  
Yoga Lawn  
Reflexology Path  
Resting Area (Seating)



## ACTIVE RECREATION & SPORTS ZONES

Multi-Purpose Court  
Cricket Pitch  
Pickleball Court  
Fitness Corner  
Jogging / Walkway  
Skating Rink



## SOCIAL & COMMUNITY ZONES

Community Meet Up Plaza  
Senior Citizen Zone  
Alfresco Dining  
Barbeque Pavilion  
Chitchat Nook  
Coworking Stations  
Visitor Lounge  
Amphitheater  
Board Game Plaza  
Board Games  
Pet Park  
Picnic Lawn



## CHILDREN'S PLAY ZONES

Kids Play Area  
Tot Lot  
Play Mounds



## QUIET ZONES

Reading Area  
Mini Library





Swimming Pool - Olympic Size (Lap Length)

Artistic Impression



Jogging Track

Reference Image



Cricket Pitch

Reference Image



Senior Citizen Zone



Pickleball Court



Butterfly Garden



---

**ONE CLUB.  
INFINITE WORLDS.**

A fusion of Sports. Wellness. Fun. Zen.  
Entertainment and beyond.



**CLUB  
ORION**

# THE BIGGEST CLUBHOUSE OF THE REGION

**6867 Sq.Mt. (75000 Sq.Ft.)\***  
Modern Clubhouse spread over 5 levels.

A Triple height lobby adorned with  
statement art.

# WHERE EVERY DAY FEELS LIKE A CELEBRATION

From a luxury spa and grand lounges to indoor sports arenas and fine dining spaces, the clubhouse redefines indulgence. Whether it's a quiet retreat or a grand gathering, this landmark project makes every moment extraordinary. Every detail is designed to offer unmatched indulgence - making everyday living a celebration.

Social & recreational heart of the community

A perfect blend of leisure and wellness

Grand lounges & party halls

State-of-the-art gymnasium/  
fitness studio

Sports & games zones

Luxury spa & wellness retreats

Multi-cuisine fine dining spaces

Banquet & event spaces

Outdoor pools



# TRANSFORMATION OF A REGULAR DAY INTO A MODEL LIFESTYLE



## REJUVENATION BAY (THE CALM CORNER)

Heated Indoor Pool -  
Half Olympic Size  
(Lap Length)

Wellness Lounge (Spa)  
Ice/Cold Bath



## THE SPORTS PAVILION

Badminton Court  
Squash Court  
Smash Cricket Area  
Play Courts



## THE FUN FRONTIER

Karaoke Room  
Music/Jam Room  
Billiards Room  
Virtual Game  
Simulators  
Theater Lounge



## GAMING ZONE

Arcade Junction  
Bowling Alley  
Foosball Table  
Basketball Table  
Air Hockey



## THE GRAND AFFAIR

Restaurant  
Banquet Hall  
Party Hall  
Guest Rooms  
Co-working Stations  
Crèche



## THE VITALITY HUB

State-of-the-art Gym  
Yoga Studio  
Zumba Room  
Aerobics



## THE ARTISTRY ATRIUM

Art Gallery



## CLUB TERRACE

Activity Lawn  
Outdoor Café  
Seating Garden  
Outdoor Seating  
Viewing Pavilion  
Herb Garden  
Sky Lounge  
Sky Bar





Heated Indoor Pool - Half Olympic Size (Lap Length)



Theater Lounge

Artistic Impression



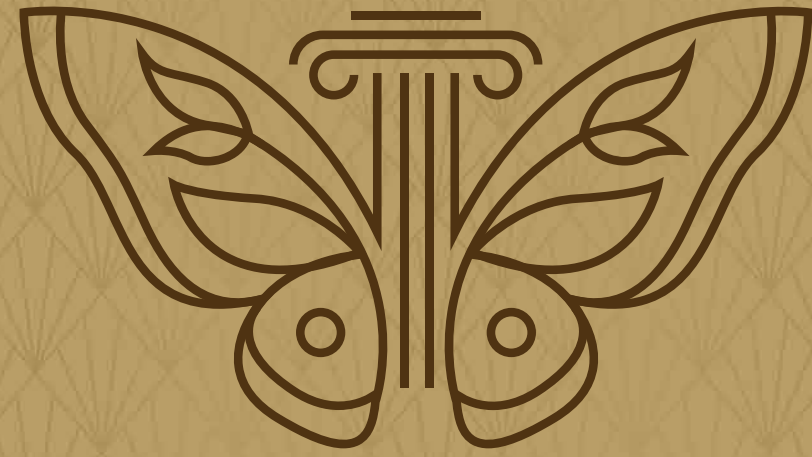
Arts Room

Reference Image



Music Room

Reference Image



WHERE EVERY DETAIL  
EMBODIES DISTINCTION



---

Welcome to a home where elegance is not displayed, but lived. Every corner tells a story of refinement, and every detail reflects an artful pursuit of perfection. More than a residence, it is an heirloom of rare luxury - created for those who seek distinction. The interiors unite timeless grace with modern sophistication, shaping sanctuaries that celebrate life at its finest.





*The beauty of becoming begins the moment you walk in*

GRAND ENTRANCE

Artistic Impression



*Where moments become beautiful memories*

LIVING ROOM



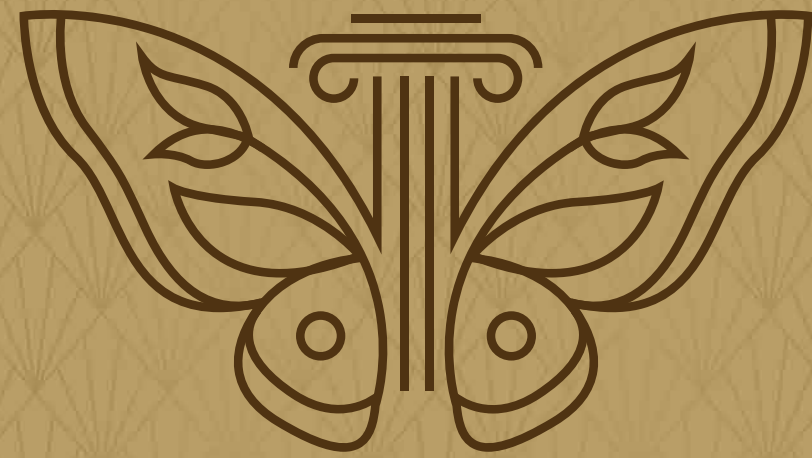
*A legacy of distinction*

DINING AREA



*Inviting an ultra-luxurious lifestyle*

MASTER BEDROOM

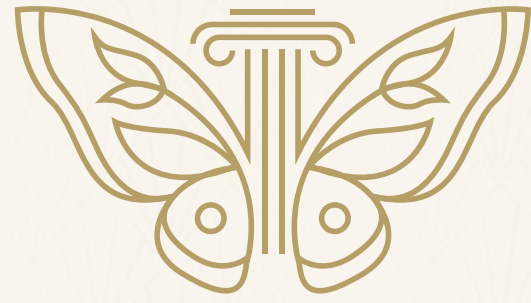


DESIGN MEETS  
EXPRESSION



ARCHITECTURAL  
BLUEPRINTS OF  
FINESSE





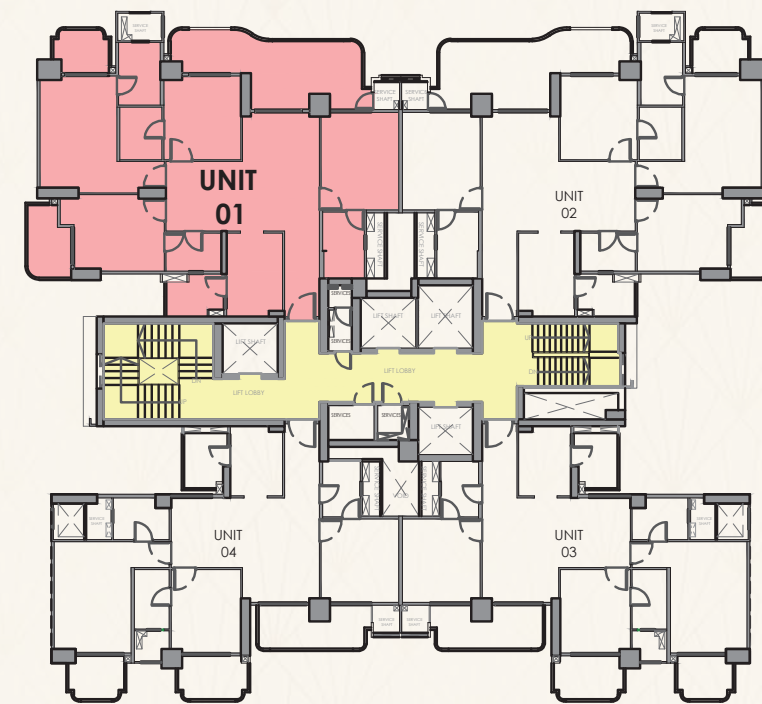
## UNIT PLAN 1 - 4 BHK

1 BASEMENT+  
STILT-1/PODIUM/GROUND +  
STILT-2/ UPPER GROUND +  
34 STOREY

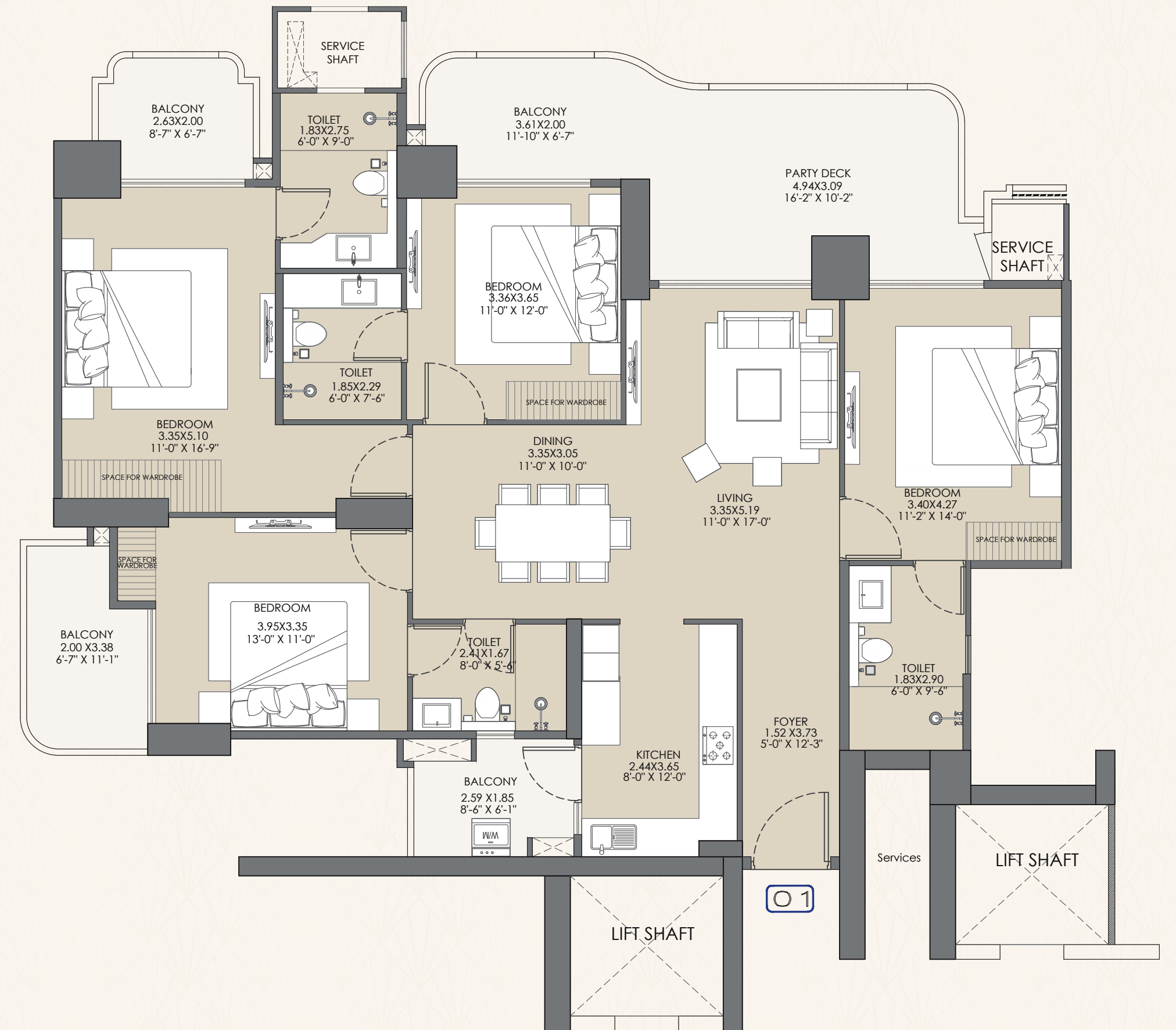
4 BEDROOMS + LIVING ROOM  
+ DINING + FOYER+ KITCHEN  
WITH UTILITY BALCONY +  
4 TOILETS + 1 BIG BALCONY +  
2 BALCONIES

### AREA DETAILS

BUILT-UP AREA	=	178.55 SQ. MT / 1922 SQ. FT
		(Covered Area + Balcony Area)
CARPET AREA	=	124.54 SQ.MT / 1340 SQ.FT
COVERED AREA	=	141.73 SQ.MT / 1526 SQ.FT
BALCONY AREA	=	36.82 SQ.MT / 396 SQ.FT
COMMON AREA	=	53.24 SQ.MT / 573 SQ.FT
TOTAL AREA	=	231.79 SQ.MT / 2495 SQ.FT



KEY PLAN



Disclaimer: The layout is an artistic impression provided for representation purpose only. All internal and external area measurements are from unfinished surfaces. Final details of the apartment shall be specified in the agreement. Plans are not to scale, and all dimensions are in meters (mt.) 1 sq.mt. = 10.764 sft.



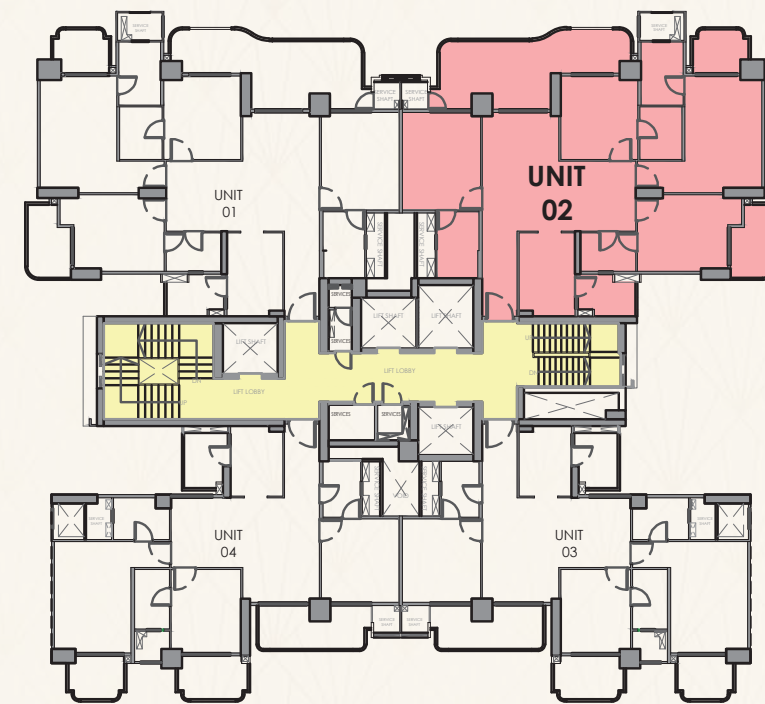
## UNIT PLAN 2 - 4 BHK

1 BASEMENT+  
STILT-1/PODIUM/GROUND +  
STILT-2/ UPPER GROUND +  
34 STOREY

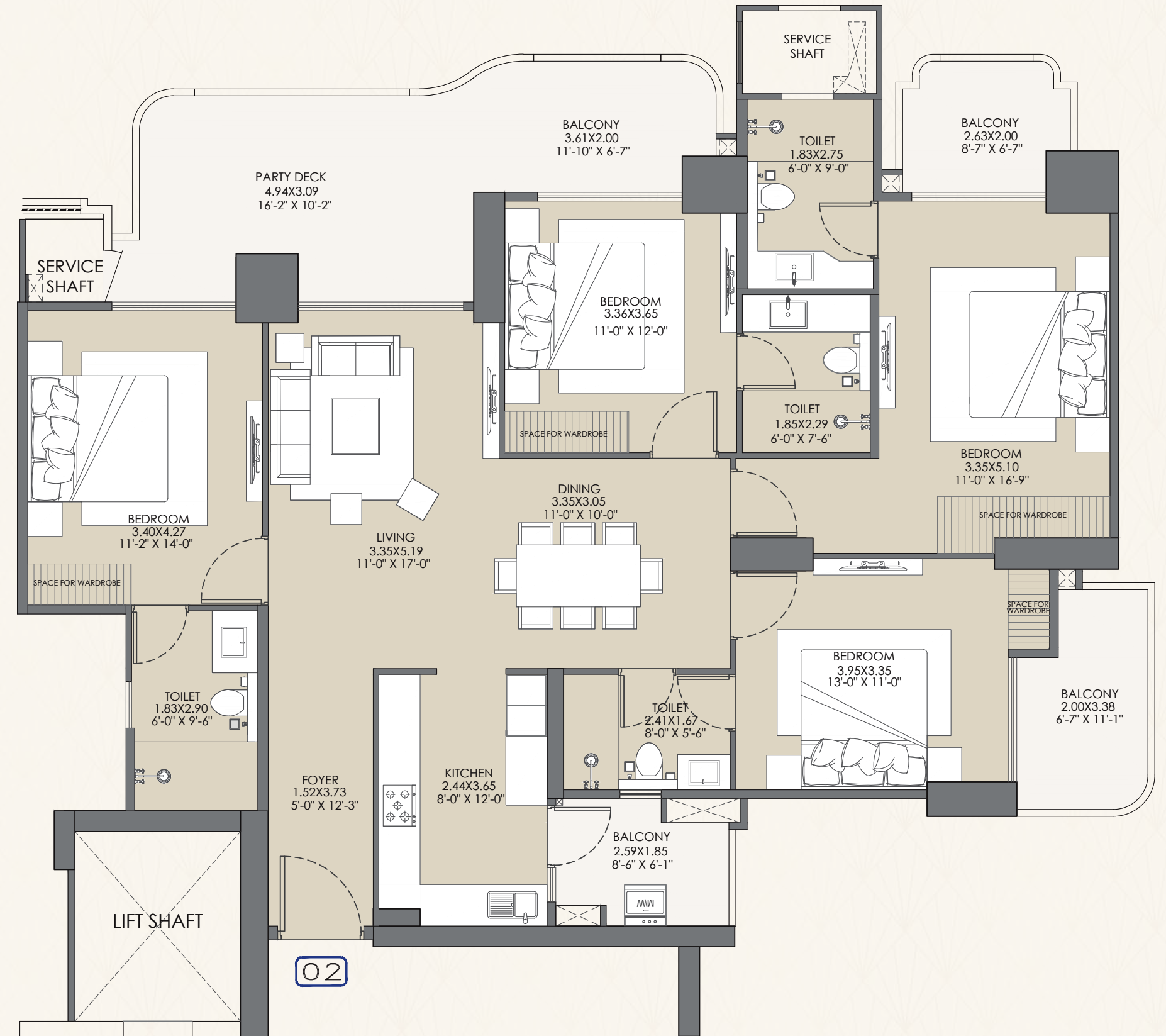
4 BEDROOMS + LIVING ROOM  
+ DINING + FOYER+ KITCHEN  
WITH UTILITY BALCONY +  
4 TOILETS + 1 BIG BALCONY +  
2 BALCONIES

### AREA DETAILS

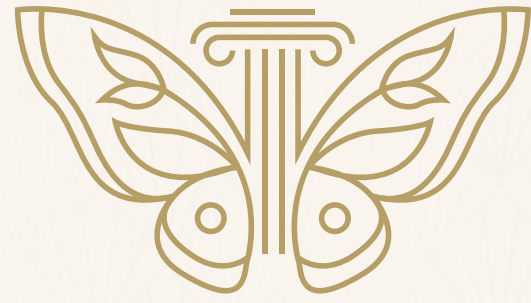
BUILT-UP AREA	=	178.55 SQ. MT / 1922 SQ. FT
		(Covered Area + Balcony Area)
CARPET AREA	=	124.54 SQ.MT / 1340 SQ.FT
COVERED AREA	=	141.73 SQ.MT / 1526 SQ.FT
BALCONY AREA	=	36.82 SQ.MT / 396 SQ.FT
COMMON AREA	=	53.24 SQ.MT / 573 SQ.FT
TOTAL AREA	=	231.79 SQ.MT / 2495 SQ.FT



KEY PLAN



Disclaimer: The layout is an artistic impression provided for representation purpose only. All internal and external area measurements are from unfinished surfaces. Final details of the apartment shall be specified in the agreement. Plans are not to scale, and all dimensions are in meters (mt.) 1 sq.mt. = 10.764 sft.



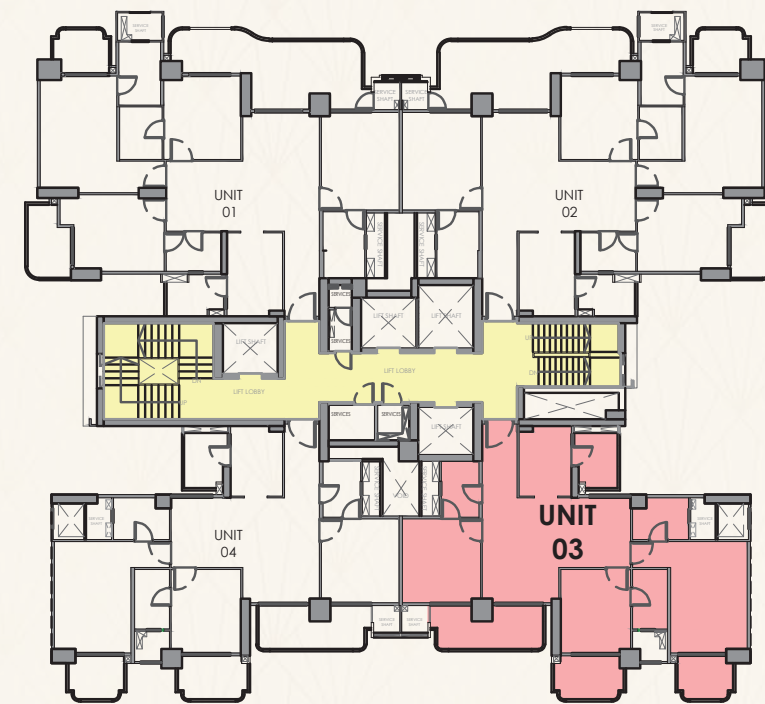
## UNIT PLAN 3 - 3 BHK

1 BASEMENT+  
STILT-1/PODIUM/GROUND +  
STILT-2/ UPPER GROUND +  
34 STOREY

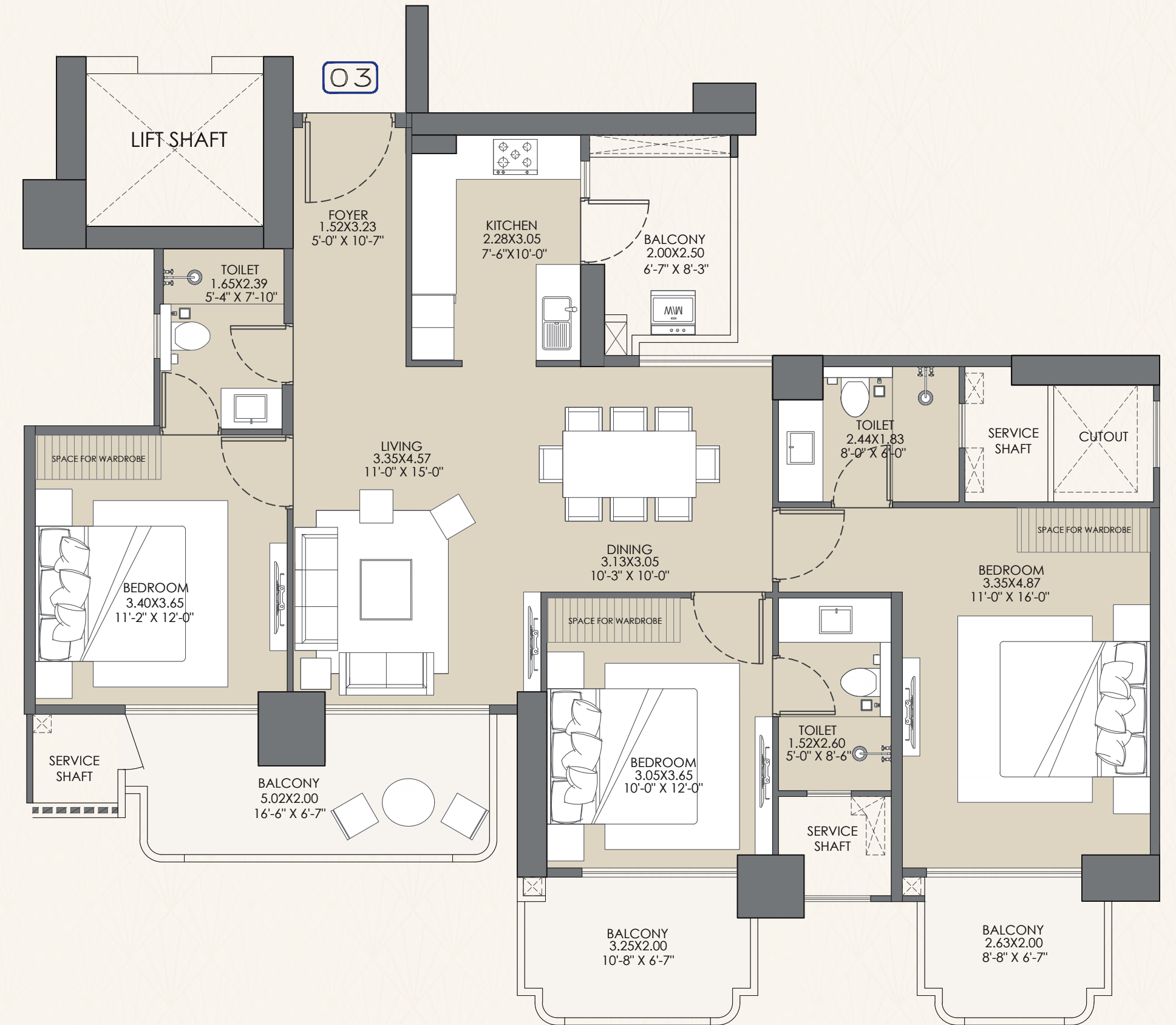
3 BEDROOMS + LIVING ROOM  
+ DINING + FOYER + KITCHEN  
WITH UTILITY BALCONY +  
3 TOILETS + 3 BALCONIES

### AREA DETAILS

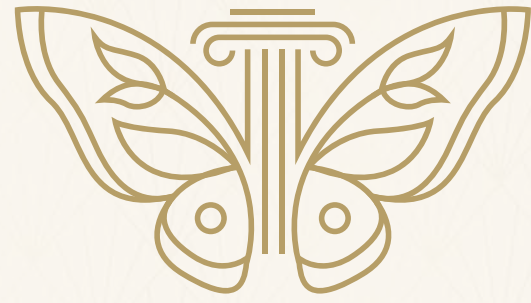
BUILT-UP AREA	=	137.07 SQ. MT / 1475 SQ. FT
		(Covered Area + Balcony Area)
CARPET AREA	=	92.83 SQ.MT / 999 SQ.FT
COVERED AREA	=	112.12 SQ.MT / 1207 SQ.FT
BALCONY AREA	=	24.95 SQ.MT / 268 SQ.FT
COMMON AREA	=	40.37 SQ.MT / 435 SQ.FT
TOTAL AREA	=	177.44 SQ.MT / 1910 SQ.FT



KEY PLAN



Disclaimer: The layout is an artistic impression provided for representation purpose only. All internal and external area measurements are from unfinished surfaces. Final details of the apartment shall be specified in the agreement. Plans are not to scale, and all dimensions are in meters (mt.) 1 sq.mt. = 10.764 sft.



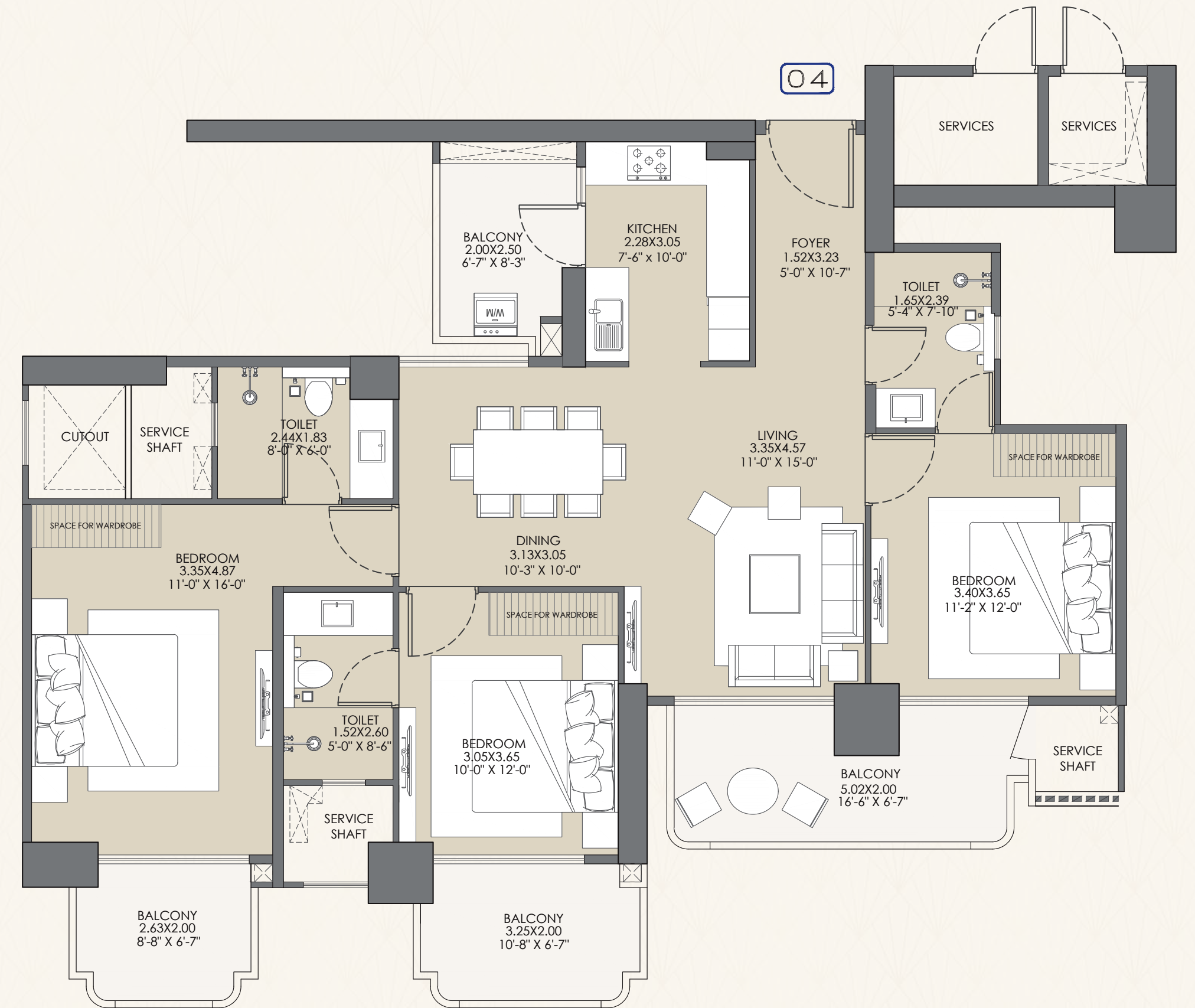
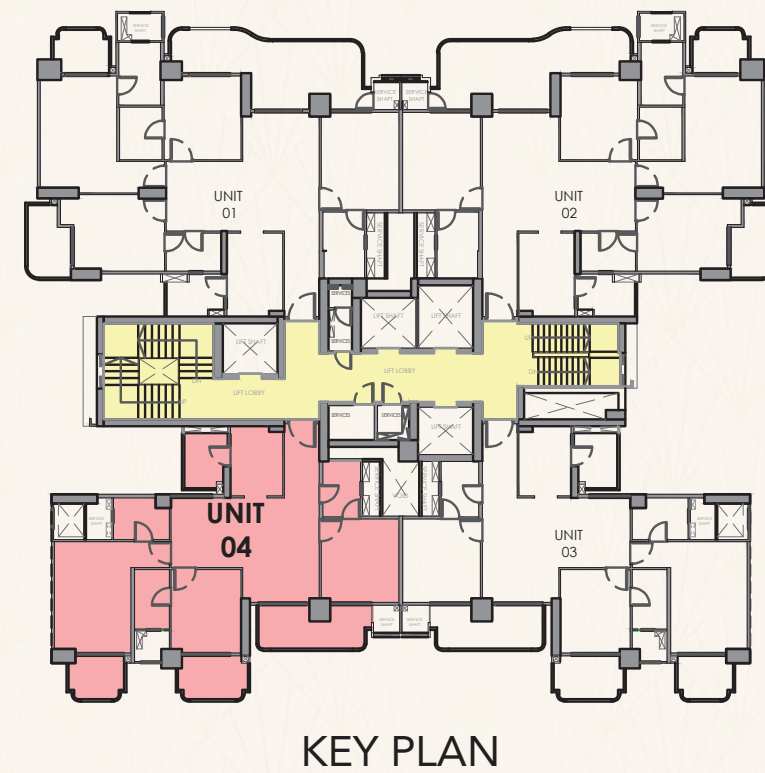
## UNIT PLAN 4 - 3 BHK

1 BASEMENT+  
STILT-1/PODIUM/GROUND +  
STILT-2/ UPPER GROUND +  
34 STOREY

3 BEDROOMS + LIVING ROOM  
+ DINING + FOYER + KITCHEN  
WITH UTILITY BALCONY +  
3 TOILETS + 3 BALCONIES

### AREA DETAILS

BUILT-UP AREA	=	137.07 SQ. MT / 1475 SQ. FT
		(Covered Area + Balcony Area)
CARPET AREA	=	92.83 SQ.MT / 999 SQ.FT
COVERED AREA	=	112.12 SQ.MT / 1207 SQ.FT
BALCONY AREA	=	24.95 SQ.MT / 268 SQ.FT
COMMON AREA	=	40.37 SQ.MT / 435 SQ.FT
TOTAL AREA	=	177.44 SQ.MT / 1910 SQ.FT



Disclaimer: The layout is an artistic impression provided for representation purpose only. All internal and external area measurements are from unfinished surfaces. Final details of the apartment shall be specified in the agreement. Plans are not to scale, and all dimensions are in meters (mt.) 1 sq.mt. = 10.764 sft.



**GAUR**  
**CHRYSALIS**  
*— The Beauty of Becoming —*

**PHASE 1 AT SECTOR 22-D, YAMUNA EXPRESSWAY**

<b>TOTAL NUMBER OF UNITS</b>	952 – PHASE 1
<b>TOTAL NUMBER OF TOWERS</b>	7
<b>FLOOR TO FLOOR HEIGHT</b>	3.35 MTR.

**COMMUNITY FACILITY**

Independent Club Building, having spread in Basement floor, stilt floor, podium floor, and 2 floor plates with amenities comprising sports activities like

Squash Court	Gaming Zone	Work Stations
Badminton Court	Billiard Room	Theater Lounge
Smash Cricket	Virtual Game Simulator	Gymnasium
Play Courts	Music Room	Yoga/Aerobics/Zumba Room
Entrance Lobby with drop off on Stilt floor	Karaoke Room	Wellness Lounge (SPA area)
Landscaped Garden	Restaurant	Indoor Heated Pool (Half Olympic Size Lap Length)
Outdoor activities along with Swimming Pool (Olympic Size Lap Length) and Entrance Lobby with	Banquet with pre function area and Kitchen	Ice / Cold Bath
Art Gallery	4 Guest Rooms	
	Party Hall	

Note: All the above said Community Facilities will be shared between all towers including Phase 1 and future development (Phase 2) as these facilities will be ready with phase-2 completion.

**SPECIFICATIONS**

**FLOORING:**

DRAWING	TILE FLOORING
DINING	TILE FLOORING
KITCHEN	TILE FLOORING
ALL BEDROOMS	LAMINATED WOODEN FLOORING

TOILETS	TILE FLOORING
BALCONIES	TILE FLOORING

**KITCHEN:**

COUNTER	GRANITE KITCHEN COUNTER WITH STAINLESS STEEL SINK, FITTED R.O./HOB
WOOD WORK	KITCHEN CABINET ONLY
WALL TILES	TILES 2FT. ABOVE WORKING COUNTER.

**VANITY:**

WALL TILE:	ONE IN EACH TOILET
	WALL TILES IN TOILETS UP TO DOOR LEVEL.

**AIR CONDITIONING:**

SPLIT ACs	1.5 TON AC IN BEDROOMS & LIVING/DINING ONLY
-----------	---

**WIRING & SWITCHES:**

WIRING	COPPER WIRING IN CONCEALED PVC CONDUITS.
SWITCHES	MODULAR SWITCHES & SOCKETS IN ADEQUATE NUMBERS.
TV POINTS	IN ALL ROOMS

**WALL FINISH:**

EXTERNAL	TEXTURE PAINT
INTERNAL	ALL INTERNAL WALLS OF ROOM'S & DRAWING & DINING AREA USING OBD PAINT.

**ELECTRICAL FITTINGS:**

EXHAUST FAN	IN TOILETS
LIGHT FIXTURE	CEILING LIGHT IN DRAWING ROOM ALL BEDROOMS, KITCHEN AND TOILET.

**DOORS & WINDOWS:**

EXTERNAL	UPVC SLIDING/OPENABLE DOORS & WINDOWS
INTERNAL	FLUSH DOORS FIXED IN ENGINEERED WOOD DOOR FRAME

**SANITARY WORK:**

INTERNAL PIPING	CPVC OR EQUIVALENT PIPES & FITTINGS
FITTINGS	ALL TAPS AND FITTINGS OF REPUTED BRANDS IN CHROME PLATING. WASH BASINS, WALL MOUNTED W/C OF REPUTED BRANDS IN WHITE SHADES.

**RAILING:**

BALCONY	MS RAILING, PAINTED
STAIRCASE	MS RAILING, PAINTED

**SECURITY:**

MAIN DOOR	ELECTRONIC LOCK AT MAIN DOOR
-----------	------------------------------

## A LEGACY OF UNRIVALLED LUXURY

At Gaur Group, luxury isn't just built - it's beautifully lived. We don't just create structures; we craft timeless experiences that become cherished memories. With every landmark we design, our commitment to excellence climbs higher, delivering not just homes, but lifestyles defined by elegance and distinction. Our visionary 'life-craftsmen' are handpicked for their exceptional ability to shape spaces that go beyond imagination. Step into a world where luxury knows no limits - step into the enduring legacy of Gaur.



## CREATING MASTERPIECES WITH INTENTION AND HEART

At Gaur, luxury isn't built with bricks, it's crafted with stories and this has stayed the same since our inception in the year 1995. Gaur has been revered as an icon of excellence in the world of real estate because we don't just create spaces, we craft experiences. Each landmark is a refined brushstroke in our ongoing quest to elevate the art of living, from high-end apartments to highly affordable accommodations occupied by thousands of happy and flourishing families.

Life in a Gaur home is an exceptional life, woven with countless memories. For us, your trust and happiness is our winning mantra. Our dedicated craftsmen, chosen for their unwavering commitment to excellence, pour their passion into every detail to surpass your every expectation.

Welcome to a world beyond the ordinary, where luxury is not just a label, but a legacy. Welcome to Gaur.



## AWARD-WINNING EXCELLENCE, YEAR AFTER YEAR

Since 1995, Gaur's has redefined the landscape of real estate with a steadfast commitment to quality and trust. Our expansive portfolio spans from high-end luxury residences to thoughtfully crafted affordable homes - each proudly inhabited by thousands of satisfied families.

Our success is built on more than just structures - it's founded on the trust we've earned and the lives we've transformed. Guided by a bold vision for the future, we meticulously choose prime locations and deliver with precision, ensuring every project exceeds expectations.

With passion at our core and confidence in every step, Gaur's continues to shape tomorrow - creating spaces where life truly thrives.

REAL ESTATE | RETAIL | EDUCATION | HOTELS

NBFC | CONTRACTING | SPORTS | ENERGY

## THE HIGHS OF OUR SUCCESS STORY

45

DELIVERED RESIDENTIAL PROJECTS

30

DELIVERED COMMERCIAL PROJECTS

11

ONGOING RERA REGISTERED PROJECTS

3

GAUR'S INTERNATIONAL SCHOOL

3

DELIVERED TOWNSHIP PROJECTS

2

DELIVERED RETAIL PROJECTS (MALLS)

## THE MOST CELEBRATED REAL ESTATE DEVELOPER



REALTY+ CONCLAVE & EXCELLENCE AWARDS 2025 - NORTH VILLA PROJECT OF THE YEAR - LEGACY BY GAURS



REALTY+ CONCLAVE & EXCELLENCE AWARDS 2025 - NORTH DEVELOPER OF THE YEAR - GAURS GROUP



REALTY+ CONCLAVE AND EXCELLENCE AWARDS - NORTH 2024 BEST SELLING PROJECT OF THE YEAR - GAUR NYC RESIDENCES



REALTY+ CONCLAVE AND EXCELLENCE AWARDS - NORTH 2024 THEMED PROJECT OF THE YEAR - GAUR NYC RESIDENCES



REALTY+ EXCELLENCE AWARDS NORTH 2023 ULTRA LUXURY LIFESTYLE PROJECT OF THE YEAR - THE ISLANDS BY GAURS



REALTY+ EXCELLENCE AWARDS NORTH 2023 EXCELLENCE IN DELIVERY - GAUR WORLD SMARTSTREET



MAPIC INDIA SHOPPING CENTER AWARDS 2022 BEST MALL FOR LEISURE AND ENTERTAINMENT - DELHI NCR - GAUR CITY MALL



SMART CITY EMPOWERING INDIA AWARDS 2020 BEST SMART CITY DEVELOPER OF THE YEAR - GAURSONS INDIA



PMAY EMPOWERING INDIA AWARDS 2019 THE MOST WELL PLANNED UPCOMING PROJECT IN EWS CATEGORY GAURS SIDDHARTHAM



CNBC AWAAZ REAL ESTATE AWARDS 2018-19 BEST RESIDENTIAL PROJECT AFFORDABLE SEGMENT - NORTH ZONE - GAUR CITY-2



TIMES BUSINESS AWARDS 2019 BEST REAL ESTATE DEVELOPER OF THE YEAR - GAURSONS INDIA



CNBC AWAAZ REAL ESTATE AWARDS 2017-18 BEST RESIDENTIAL PROJECT AFFORDABLE SEGMENT - NATIONAL - GAUR CASCADES



CNBC AWAAZ REAL ESTATE AWARDS 2017-18 BEST RESIDENTIAL PROJECT AFFORDABLE SEGMENT - NORTH INDIA - GAUR CASCADES



NDTV PROPERTY AWARDS 2016-17 BUDGET APARTMENT PROJECT OF THE YEAR (2017) TIER 1 CITIES - GAUR CASCADES



NDTV PROPERTY AWARDS 2016-17 BEST TOWNSHIP PROJECT - GAUR CITY



CNBC AWAAZ REAL ESTATE AWARDS 2016-17 BEST TOWNSHIP PROJECT - GAUR CITY

30+

YEARS OF UNFLINCHING COMMITMENT

75+

SUCCESSFULLY DELIVERED PROJECTS

45000+

POSSESSIONS GIVEN (2014-2024)

75000+

SUCCESSFULLY DELIVERED UNITS

3 Lakh+

HAPPY SATISFIED CUSTOMERS

100 Million+

SQUARE FEET AREA SUCCESSFULLY DEVELOPED



## THE LOGO

A powerful emblem of transformation and timeless growth. It captures the essence of a journey where strength and elegance come together to shape progress.



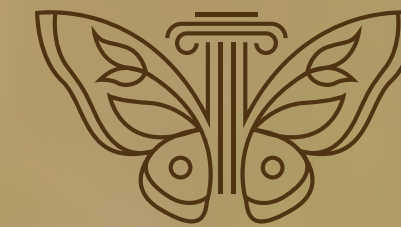
### Butterfly Motif

Symbolizing metamorphosis, beauty, and new beginnings, the butterfly reflects the very spirit of a chrysalis. The leaf-like detailing on its wings adds a deeper layer of meaning - anchoring the brand in nature, sustainability and harmony.



### Architectural Pillar

At the core lies the form of a pillar, seamlessly integrated as the butterfly's body. It conveys strength, structure, and stability - an enduring foundation on which growth and transformation can thrive.



### Together,

The Butterfly and Pillar create a perfect balance - where delicate beauty is supported by unwavering strength.

### The Tagline: "The Beauty of Becoming"

It speaks of life's most powerful phase - not just being, but becoming. "Beauty" reflects elegance, aesthetics, and the grace of transformation. "Becoming" signifies growth, evolution, and the unfolding of potential into reality.

Much like a chrysalis turning into a butterfly, **Gaur Chrysalis** is about celebrating the art of transformation and the elegance of evolution.

